



FORMER MCAS EL TORO

Site Restoration Installation Restoration Program Site 1 Adjacent Property Portion Former Marine Corps Air Station El Toro, Irvine, California

122nd Restoration Advisory Board Meeting

Samantha Blatnik, PE

Remedial Project Manager

U.S. Department of the Navy

Base Realignment and Closure Program Management Office West

San Diego, California

8 September 2021

Presentation Overview



- **Site Background**
- **Restoration Activities**
- **Ongoing Monitoring and Evaluation**

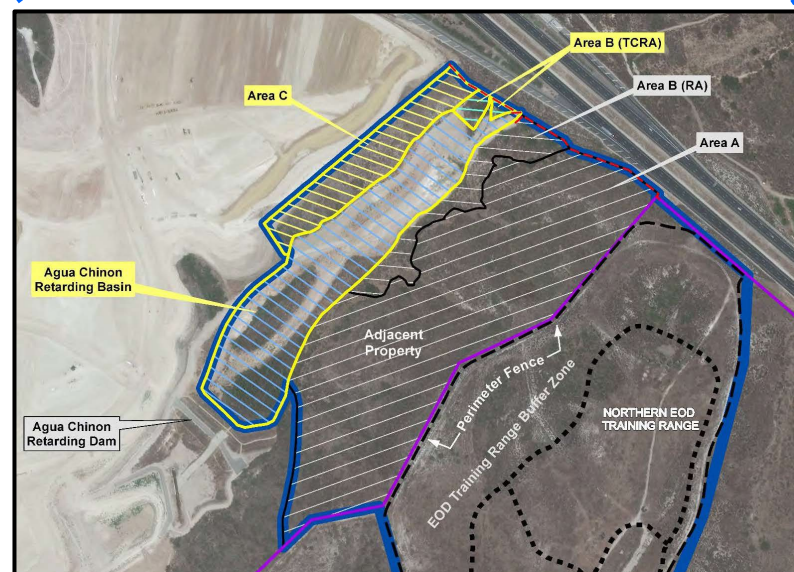
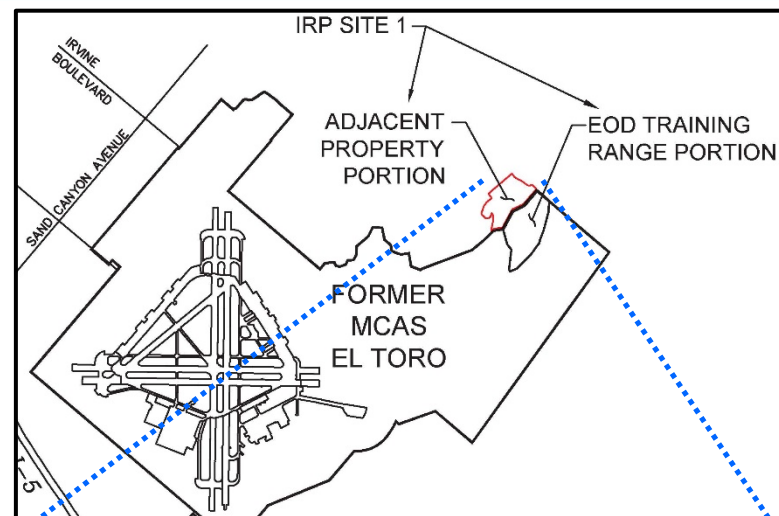
Site Background



- **2018 Time-Critical Removal Action (TCRA) on Adjacent Property portion of Installation Restoration Program (IRP) Site 1**

- Area B TCRA
- Area C
- Agua Chinon Retarding Basin (ACRB)

- **Vegetation was removed to survey for potential kick-outs from munitions training conducted on the Explosive Ordnance Disposal Training Range portion of IRP Site 1**



Site Background (cont.)



- **Dominant existing native vegetation communities**
 - Coastal Sage Scrub
 - Mule Fat Scrub
 - Southern Willow Scrub
 - Mixed Riparian Scrub

Restoration Activities



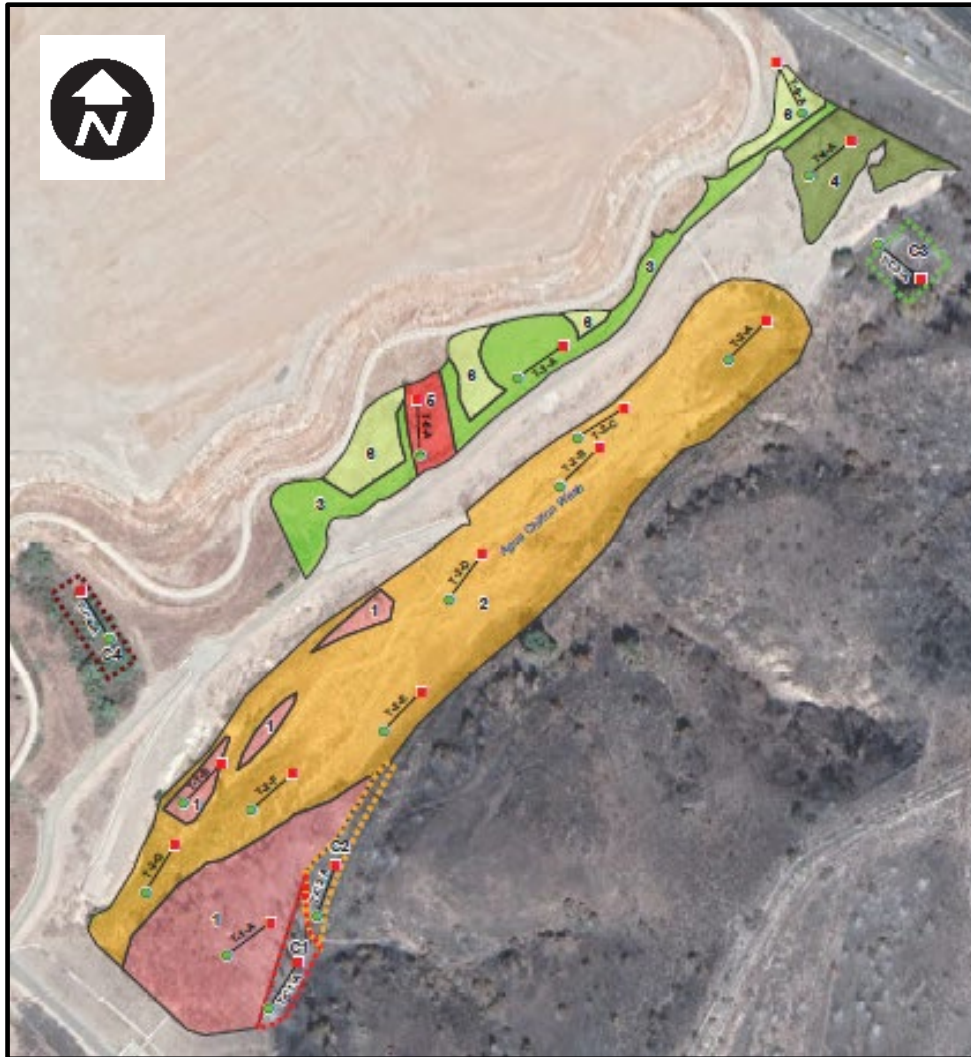
- **First step was to conduct non-native species removal/weeding (mid-2020)**
- **Next step was to revegetate approximately 12.5 acres within Area B TCRA, Area C, and ACRB (November 2020 to January 2021)**
- **Restoration comprised of six revegetation areas**
 - **Area 1 – Southern Willow Scrub (Establish)**
 - **Area 2 – Mule Fat Scrub (Enhance)**
 - **Area 3 – Coastal Sage Scrub (Establish)**
 - **Area 4 – Mixed Coastal Sage Scrub (Establish)**
 - **Area 5 – Mixed Riparian Scrub (Establish)**
 - **Area 6 – Transitional Coastal Sage Scrub (Establish)**

Restoration Activities



- **Biological monitoring performed daily**
- **Threatened avian species observed in the area**
 - Coastal California Gnatcatcher
 - Least Bell's Vireo
- **Restoration activities included**
 - Seeding (broadcast)
 - Planting of cuttings
 - Planting of container plants
 - Applying hydraulic mulch

Areas of Revegetation



Restoration Areas - TCRA Footprint

- 1** Southern Willow Scrub (Reestablish) - 2.298 acres
- 2** Mulefat Scrub (Enhance) - 6.995 acres
- 3** Coastal Sage Scrub (Establish) - 1.463 acres Mix
- 4** Coastal Sage Scrub (Establish) - 0.684 acre Mix
- 5** Riparian Scrub (Establish) - 0.273 acre Transitional
- 6** Coastal Sage Scrub (Establish) - 0.821 acre

Control Habitats (0.25 acre each)

- C1** Southern Willow Scrub
- C2** Mulefat Scrub
- C3** Coastal Sage Scrub
- C4** Mix Riparian Scrub

Point Intercept Vegetation Transects

- Point Intercept Vegetation Transect (100 feet)
- Start
- End

Plant Installation



Broadcast Seeding and Cuttings



Site Management



- **Five years of maintenance**
 - Initiated February 2021
- **Tasks**
 - Debris Removal
 - Weed Control
 - Irrigation
- **Schedule**
 - Year 1: monthly
 - Years 2–5: twice quarterly

Evaluation



- **Success criteria**
 - Year 1: 35% coverage by native species and no more than 10% non-native
- **Additional weeding and restoration activities to be initiated if success criteria are not met**
- **Up to five years of monitoring**
- **Semiannual and annual reporting**

Questions?

